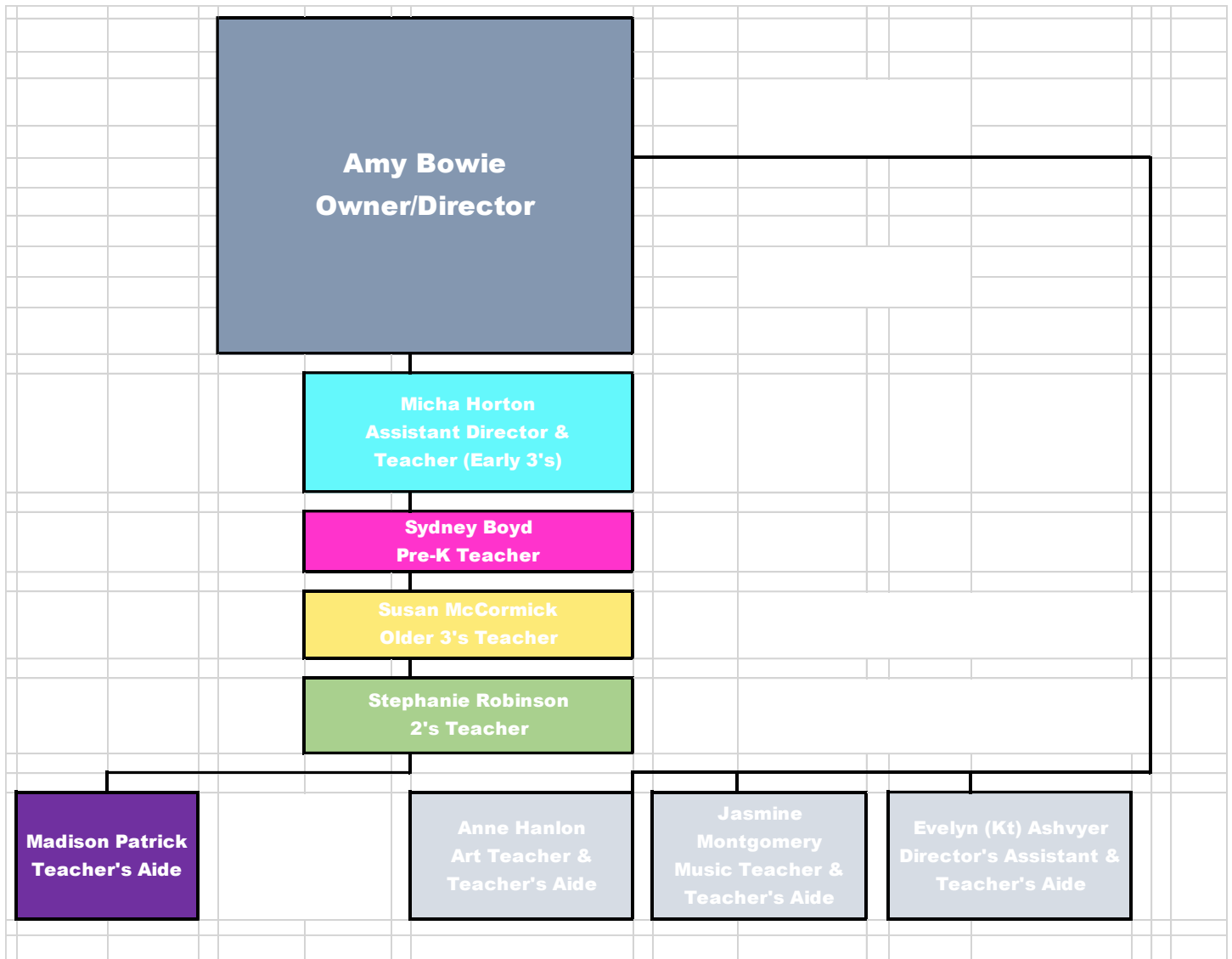


# Lines of Authority for Miss Amy's Child Care Center



- If you have any questions or concerns about the center, payments, or records, please direct these to Amy Bowie (Miss Amy). All questions related to your enrollment (example – to add/decrease the number of days your child attends) need to be discussed with Miss Amy directly.
- If you have questions or concerns about your child, please direct these to your child's teacher.
- Aids can help with clothing storage and supply needs (i.e. diapers, clothes, blankets, and pillows, etc.)

Thank you for following the set line of authority.

**Updated 10-20-2020**